

Enterprise features in compact format

Redundant network interface

Multi-lingual management interface

4K60 10-Bit per color 4:4:4 via Cat X & fiber

Up to 160-Port within only 4 RU

Individual configuration options

Scalability from 40- to 80- or 160-Port

PRODUCT INFORMATION

The Draco tera flex matrix switching series with its compact size of 1, 2 or 4 RU and up to 160 Flex-Ports is designed to support both small to mid-size applications as well as large ones. With its capability to facilitate 1G and 3G technology within a single frame as well as Cat X and fiber interfaces, it supports modern applications with a mix of 2K and 4K in very economic way. Custom design chassis even allow for future field upgradability scaling a system from 40-Port to 80-Port or even 160-Port completely non-blocking.

Grid connectivity

With its 10G grid option Draco tera flex can act as a nice satellite to a core enterprise system using the least

amount of infrastructure building a deployed homogeneous large matrix grid.

Ease of setup

By simply connecting the extender to the chassis, the internal application control software will recognize and auto-configure the port as a CPU or CON device. This Flex-Port technology provides a huge time saving for system installers who normally have to pre-configure ports to specific I/O requirements. The system also supports instant switching technology. With incredible speed, switching between sources is glitchfree and instantaneous thus reducing eye strain and annoying video tearing found with other systems.

Where centralized switching of KVM is necessary, the Draco tera flex is the perfect KVM solution. It is especially suited for factory floor automation control systems, production studios, OB Vans as well as command and control environments.

Compatibility

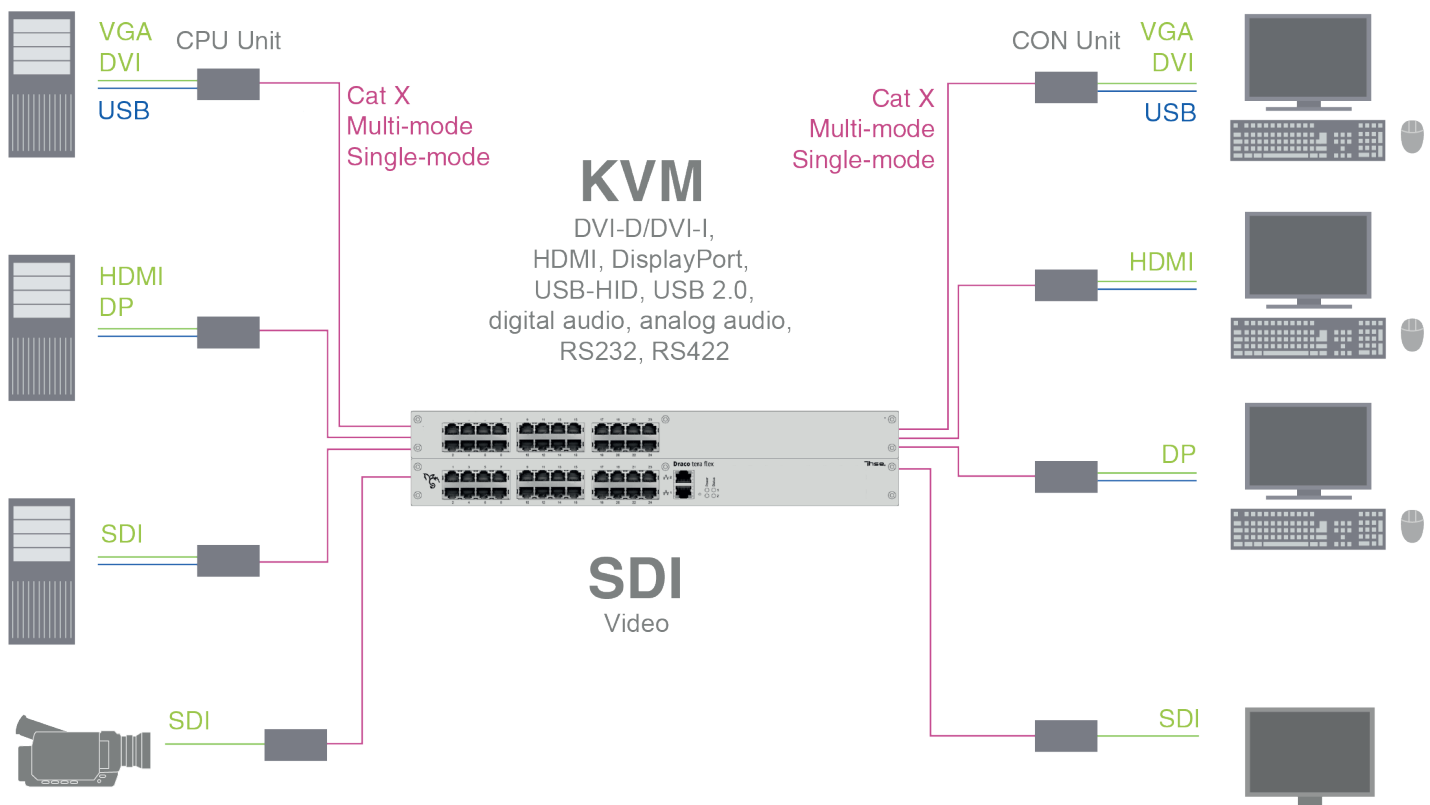
Draco tera flex is compatible with all Draco vario extenders. All that needs to be taken care of is correct link speed and interface of the used endpoints and their codec version. Draco tera flex is already prepared for future backward compatibility of Draco vario ultra CON units to Draco vario CPUs.

PRODUCT FEATURES

- Features compatible to current Draco tera enterprise series and those with new controller cards:
 - SNMPv3, LDAPS
 - O/S v04.x support for multilingual OSD (Chinese, German, French, Spanish, ...)
 - encrypted communication for API, Tool and Grid, individual routing of protocols
 - faster boot up
 - improved grid integration (faster & more reliable communication) incl. grid module
- Variations with Cat X and fiber as well as 1G, 3G possible - also mixed is possible
- Prepared for upcoming 1G/3G compatibility, IPv6
- Internal modular concept allows for scalability and maintenance (similar to Draco major series)
- Compatible to all Draco vario and Draco vario ultra extenders
- Redundant Power supply unit and Network interface connections
- Versatility: With only 3 types of chassis and only 5 types of I/O modules, an almost endless number of customer specific Draco tera flex matrix switches are possible
- Replaces current Draco tera compact series - the 8-port compact switch will still be available as an entry-level variant for smaller KVM installations

TECHNICAL DATA						
Input / Output	16x - 160x Cat X or fiber (any combination) 2x RJ-45 Gigabit Ethernet					
Supported signals	DisplayPort, HDMI, DVI-D, DVI-I, USB 2.0, USB-HID, RS232, RS422, analog / digital or balanced audio, SDI via Draco vario extenders					
Maximum cable distance	Cat X	Cat X 3G	Single-Mode Fiber (9 µm)	Single-Mode Fiber 3G (9 µm)	Multi-Mode Fiber (50 µm, OM3)	Multi-Mode Fiber (50 µm)
	140 m	100 m	10.000 m	5.000 m	1.000 m	400 m
Control	OSD (On Screen Display), Draco tera Tool (Java), API					
	1RU		2RU		4RU	
Power	100-240V 3A 50/60Hz		100-240V 4A 50/60Hz		100-240V 5.8A 50/60Hz	
Dimensions	44 x 442 x 449 mm		90 x 442 x 449 mm		177 x 442 x 449 mm	
Weight	approx. 7,7 kg		approx. 11 kg		approx. 19 kg	
Suitable extenders	Compatible to all Draco vario extenders: www.ihse.com/kvm-extender					

FUNCTIONAL DIAGRAM



IHSE offers an online tool for free configuration of your KVM projects. It enables documentation and verification of individual extenders up to complete matrix applications. All KVM switches and extenders are available for selection, including add-on modules, chassis variants and special accessories: dsd.ihse.com

ORDER NUMBERS

Draco tera flex Cat X & Cat X 3G

Scaling up: 16 - 160-Port



16-Port



24-Port



32-Port



40-Port



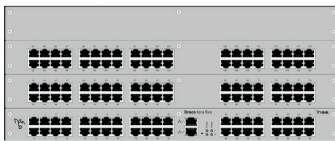
48-Port



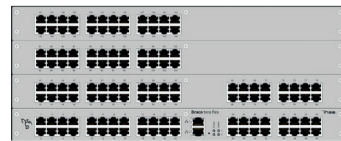
64-Port



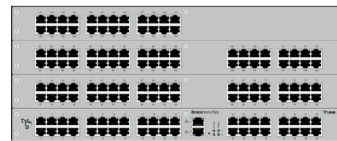
80-Port



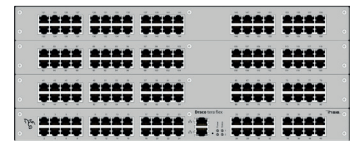
120-Port



128-Port



144-Port



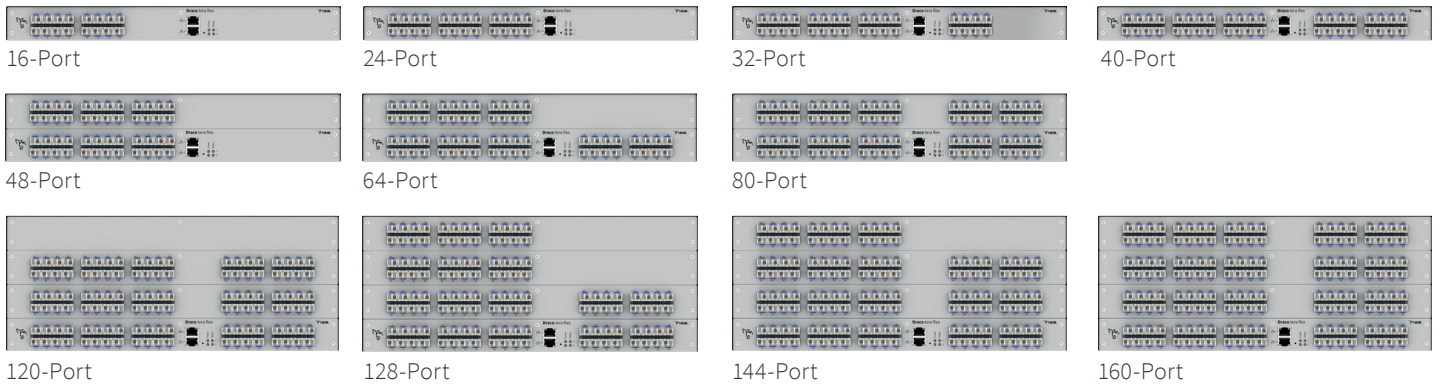
160-Port

CAT X 1G DEVICE MODELS	PART NO.
Draco tera flex KVM matrix 16 ports, Cat X 1G	K480-C16
Draco tera flex KVM matrix 24 ports, Cat X 1G	K480-C24
Draco tera flex KVM matrix 32 ports, Cat X 1G	K-480-C32
Draco tera flex KVM matrix 40 ports, Cat X 1G	K480-C40
Draco tera flex KVM matrix 48 ports, Cat X 1G	K480-C48
Draco tera flex KVM matrix 64 ports, Cat X 1G	K480-C64
Draco tera flex KVM matrix 80 ports, Cat X 1G	K480-C80
Draco tera flex KVM matrix 120 ports, Cat X 1G	K480-C120
Draco tera flex KVM matrix 128 ports, Cat X 1G	K480-C128
Draco tera flex KVM matrix 144 ports, Cat X 1G	K480-C144
Draco tera flex KVM matrix 160 ports, Cat X 1G	K480-C160

CAT X 3G DEVICE MODELS	PART NO.
Draco tera flex KVM matrix 16 ports, Cat X 3G	K480-CX16
Draco tera flex KVM matrix 24 ports, Cat X 3G	K480-CX24
Draco tera flex KVM matrix 32 ports, Cat X 3G	K480-CX32
Draco tera flex KVM matrix 40 ports, Cat X 3G	K480-CX40
Draco tera flex KVM matrix 48 ports, Cat X 3G	K480-CX48
Draco tera flex KVM matrix 64 ports, Cat X 3G	K480-CX64
Draco tera flex KVM matrix 80 ports, Cat X 3G	K480-CX80
Draco tera flex KVM matrix 120 ports, Cat X 3G	K480-CX120
Draco tera flex KVM matrix 128 ports, Cat X 3G	K480-CX128
Draco tera flex KVM matrix 144 ports, Cat X 3G	K480-CX144
Draco tera flex KVM matrix 160 ports, Cat X 3G	K480-CX160

Draco tera flex **Fiber & Fiber 3G**

Scaling up: 16 - 160-Port



FIBER 1G DEVICE MODELS	PART NO.
Draco tera flex KVM matrix 16 ports, fiber 1G	K480-F16
Draco tera flex KVM matrix 24 ports, fiber 1G	K480-F24
Draco tera flex KVM matrix 32 ports, fiber 1G	K480-F32
Draco tera flex KVM matrix 40 ports, fiber 1G	K480-F40
Draco tera flex KVM matrix 48 ports, fiber 1G	K480-F48
Draco tera flex KVM matrix 64 ports, fiber 1G	K480-F64
Draco tera flex KVM matrix 80 ports, fiber 1G	K480-F80
Draco tera flex KVM matrix 120 ports, fiber 1G	K480-F120
Draco tera flex KVM matrix 128 ports, fiber 1G	K480-F128
Draco tera flex KVM matrix 144 ports, fiber 1G	K480-F144
Draco tera flex KVM matrix 160 ports, fiber 1G	K480-F160

FIBER 3G DEVICE MODELS	PART NO.
Draco tera flex KVM matrix 16 ports, fiber 3G	K480-FX16
Draco tera flex KVM matrix 24 ports, fiber 3G	K480-FX24
Draco tera flex KVM matrix 32 ports, fiber 3G	K480-FX32
Draco tera flex KVM matrix 40 ports, fiber 3G	K480-FX40
Draco tera flex KVM matrix 48 ports, fiber 3G	K480-FX48
Draco tera flex KVM matrix 64 ports, fiber 3G	K480-FX64
Draco tera flex KVM matrix 80 ports, fiber 3G	K480-FX80
Draco tera flex KVM matrix 120 ports, fiber 3G	K480-FX120
Draco tera flex KVM matrix 128 ports, fiber 3G	K480-FX128
Draco tera flex KVM matrix 144 ports, fiber 3G	K480-FX144
Draco tera flex KVM matrix 160 ports, fiber 3G	K480-FX160

KVM Marix from 16 - 160 Ports

Draco tera flex Hybrid & Hybrid 3G

Scaling up: 40 - 160-Port



40-Ports



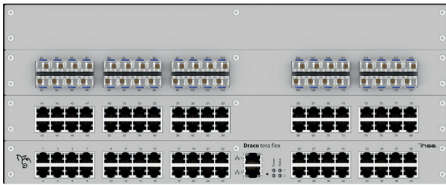
64-Ports



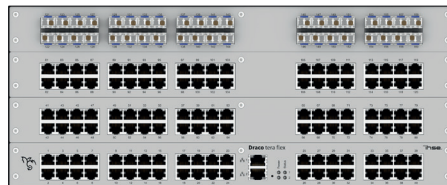
64-Ports



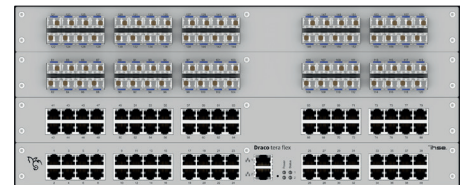
80-Ports



120-Ports



160-Ports



160-Ports

HYBRID 1G DEVICE MODELS	PART NO.
Draco tera flex KVM matrix 40 ports (24 Cat X, 16 fiber), hybrid 1G	K480-C24F16
Draco tera flex KVM matrix 64 ports (24 Cat X, 40 fiber), hybrid 1G	K480-C24F40
Draco tera flex KVM matrix 64 ports (40 Cat X, 24 fiber), hybrid 1G	K480-C40F24
Draco tera flex KVM matrix 80 ports (40 Cat X, 40 fiber), hybrid 1G	K480-C40F40
Draco tera flex KVM matrix 120 ports (80 Cat X, 40 fiber), hybrid 1G	K480-C80F40
Draco tera flex KVM matrix 160 ports (120 Cat X, 40 fiber), hybrid 1G	K480-C120F40
Draco tera flex KVM matrix 160 ports (80 Cat X, 80 fiber), hybrid 1G	K480-C80F80

HYBRID 3G DEVICE MODELS	PART NO.
Draco tera flex KVM matrix 40 ports (24 Cat X, 16 fiber), hybrid 3G	K480-CX24FX16
Draco tera flex KVM matrix 64 ports (24 Cat X, 40 fiber), hybrid 3G	K480-CX24FX40
Draco tera flex KVM matrix 64 ports (40 Cat X, 24 fiber), hybrid 3G	K480-CX40FX24
Draco tera flex KVM matrix 80 ports (40 Cat X, 40 fiber), hybrid 3G	K480-CX40FX40
Draco tera flex KVM matrix 120 ports (80 Cat X, 40 fiber), hybrid 3G	K480-CX80FX40
Draco tera flex KVM matrix 160 ports (120 Cat X, 40 fiber), hybrid 3G	K480-CX120FX40
Draco tera flex KVM matrix 160 ports (80 Cat X, 80 fiber), hybrid 3G	K480-CX80FX80

Draco tera flex Grid versions

Grid Interface: 32-Port



GRID VERSIONS	PART NO.
Draco tera flex KVM matrix 32 ports + Grid, 1 RU, Cat X 1G	K480-C32G
Draco tera flex KVM matrix 32 ports + Grid, 1 RU, fiber 1G	K480-F32G

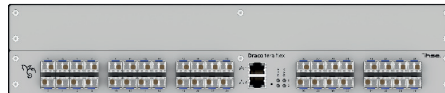
Draco tera flex Custom Design 2RU & 4RU

MODULAR CONCEPT

- Start with a 40-Port Matrix with the scalability of up to 80 ports non-blocking (2 RU)
- Start with a 40-Port Matrix with the scalability of up to 160 ports non-blocking (4 RU)
- Mix & match Cat X and Fiber in a variety of options
- Mix & match 1G and 3G (4K60) interface in a variety of options
- Offers almost Draco tera enterprise flexibility and scalability at compact size and price
- All versions with integrated Dual PSU and Dual NIC



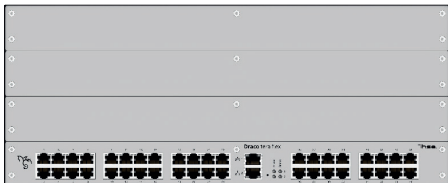
Custom Design: up to 80-Ports
K480-C40-2RU
K480-CX40-2RU



Custom Design: up to 80-Ports
K480-F40-2RU
K480-FX40-2RU



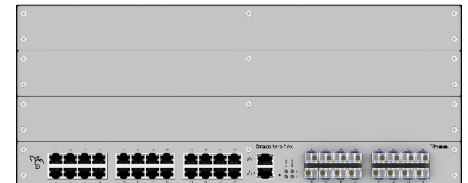
Custom Design: up to 80-Ports
K480-C24F16-2RU
K480-CX24FX16-2RU



Custom Design: up to 160-Ports
K480-C40-4RU
K480-CX40-4RU



Custom Design: up to 160-Ports
K480-F40-4RU
K480-FX40-4RU



Custom Design: up to 160-Ports
K480-C24F16-4RU
K480-CX24FX16-4RU



Custom Design: up to 80-Ports
K480-C32G-2RU
K480-CX32G-2RU



Custom Design: up to 80-Ports
K480-F32G-2RU
K480-FX32G-2RU



Custom Design: up to 160-Ports
K480-C32G-4RU
K480-CX32G-4RU



Custom Design: up to 160-Ports
K480-F32G-4RU
K480-FX32G-4RU

CUSTOM DESIGN STARTERKIT 2RU UP TO 80 PORTS	PART NO.
Draco tera flex KVM matrix 40 ports, custom design 2 RU, Cat X 1G	K480-C40-2RU
Draco tera flex KVM matrix 40 ports, custom design 2 RU, fiber 1G	K480-F40-2RU
Draco tera flex KVM matrix 40 ports, custom design 2 RU, hybrid 1G	K480-C24F16-2RU
Draco tera flex KVM matrix 40 ports, custom design 2 RU, Cat X 3G	K480-CX40-2RU
Draco tera flex KVM matrix 40 ports, custom design 2 RU, fiber 3G	K480-FX40-2RU
Draco tera flex KVM matrix 40 ports, custom design 2 RU, hybrid 3G	K480-CX24FX16-2RU
Draco tera flex KVM matrix 32 ports + Grid, custom design 2 RU, Cat X 1G	K480-C32G-2RU
Draco tera flex KVM matrix 32 ports + Grid, custom design 2 RU, fiber 1G	K480-F32G-2RU

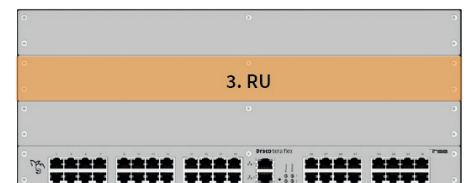
CUSTOM DESIGN STARTERKIT 4RU UP TO 160 PORTS	PART NO.
Draco tera flex KVM matrix 40 ports, custom design 4 RU, Cat X 1G	K480-C40-4RU
Draco tera flex KVM matrix 40 ports, custom design 4 RU, fiber 1G	K480-F40-4RU
Draco tera flex KVM matrix 40 ports, custom design 4 RU, hybrid 1G	K480-C24F16-4RU
Draco tera flex KVM matrix 40 ports, custom design 4 RU, Cat X 3G	K480-CX40-4RU
Draco tera flex KVM matrix 40 ports, custom design 4 RU, fiber 3G	K480-FX40-4RU
Draco tera flex KVM matrix 40 ports, custom design 4 RU, hybrid 3G	K480-CX24FX16-4RU
Draco tera flex KVM matrix 32 ports + Grid, custom design 4 RU, Cat X 1G	K480-C32G-4RU
Draco tera flex KVM matrix 32 ports + Grid, custom design 4 RU, fiber 1G	K480-F32G-4RU

CUSTOM DESIGN I/O MODULES	PART NO.
Draco tera flex 8 ports, I/O module, Cat X 1G	F480-C8
Draco tera flex 8 ports, I/O module, fiber 1G	F480-F8
Draco tera flex 8 ports, I/O module, Cat X 3G	F480-CX8
Draco tera flex 8 ports, I/O module, fiber 3G	F480-FX8
Draco tera flex Grid module fiber 10G	F480-G

CUSTOM DESIGN FRONT PLATES (2.RU)	PART NO.
Draco tera flex front plate 24x Cat X 1G/3G, Ports 41-64	F480-C24S2
Draco tera flex front plate 40x Cat X 1G/3G, Ports 41-80	F480-C40S2
Draco tera flex front plate 24x fiber 1G/3G, Ports 41-64	F480-F24S2
Draco tera flex front plate 40x fiber 1G/3G, Ports 41-80	F480-F40S2
Draco tera flex front plate 32x Cat X 1G/3G plus Grid, Ports 41-80	F480-C32GS2
Draco tera flex front plate 32x fiber 1G/3G plus Grid, Ports 41-80	F480-F32GS2



CUSTOM DESIGN FRONT PLATES (3.RU)	PART NO.
Draco tera flex front plate 24x Cat X 1G/3G, Port 81-104	F480-C24S3
Draco tera flex front plate 40x Cat X 1G/3G, Port 81-120	F480-C40S3
Draco tera flex front plate 24x fiber 1G/3G, Port 81-104	F480-F24S3
Draco tera flex front plate 40x fiber 1G/3G, Port 81-120	F480-F40S3
Draco tera flex front plate 32x Cat X 1G/3G plus Grid, Port 81-120	F480-C32GS3
Draco tera flex front plate 32x fiber 1G/3G plus Grid, Port 81-120	F480-F32GS3



CUSTOM DESIGN FRONT PLATES (4.RU)	PART NO.
Draco tera flex front plate 24x Cat X 1G/3G, Port 121-144	F480-C24S4
Draco tera flex front plate 40x Cat X 1G/3G, Port 121-160	F480-C40S4
Draco tera flex front plate 24x fiber 1G/3G, Port 121-144	F480-F24S4
Draco tera flex front plate 40x fiber 1G/3G, Port 121-160	F480-F40S4
Draco tera flex front plate 32x Cat X 1G/3G plus Grid, Port 121-160	F480-C32GS4
Draco tera flex front plate 32x fiber 1G/3G plus Grid, Port 121-160	F480-F32GS4

